

Multi Sound Module Driver installation

Bezeichnung:

**Multi Sound Module
Driver installation**

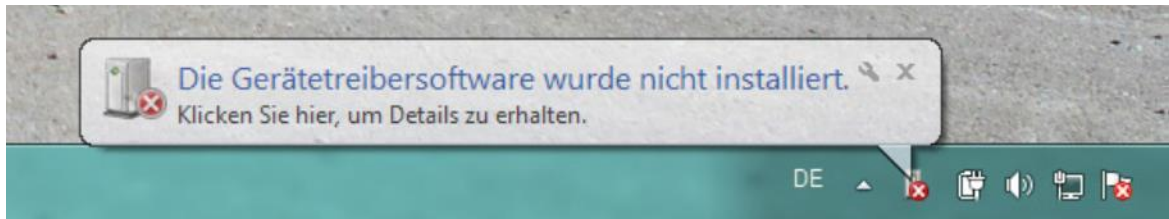
Table of Contents

1	Windows 7 32/64 Bit.....	3
1.1	Driver installation of the Multi Sound Module	3
2	Windows 8 und 8.1 32/64 Bit	9
2.1	Driver installation of Multi Sound Module	9
3	Windows 10 32/64 Bit.....	18
3.1	Driver installation of Multi Sound Module	18

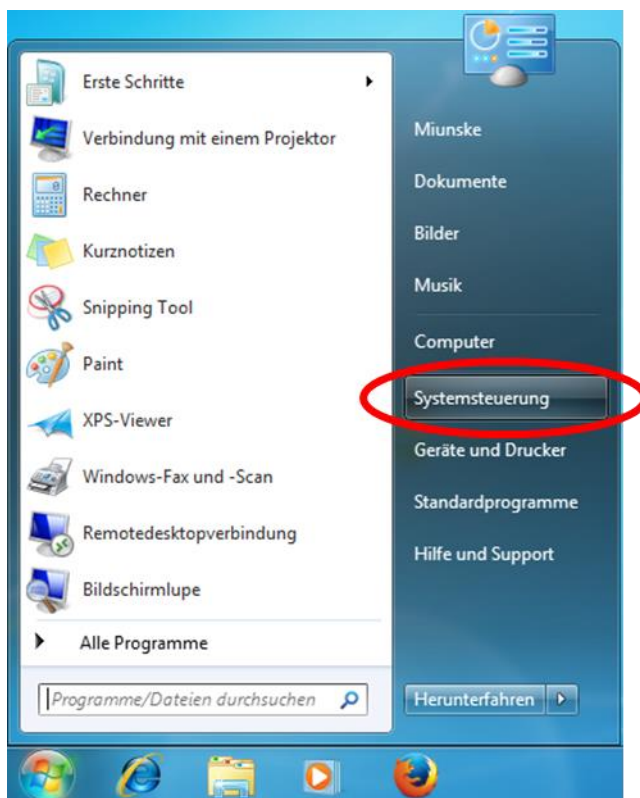
1 Windows 7 32/64 Bit

1.1 Driver installation of the Multi Sound Module

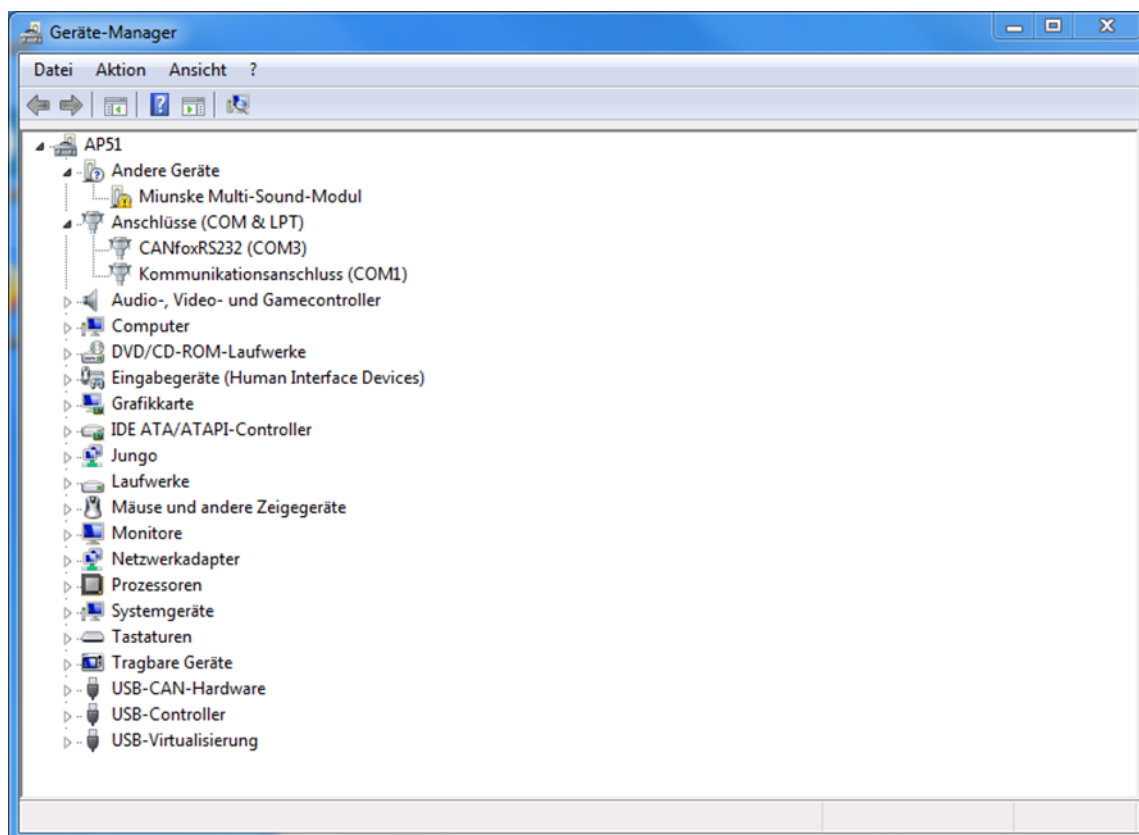
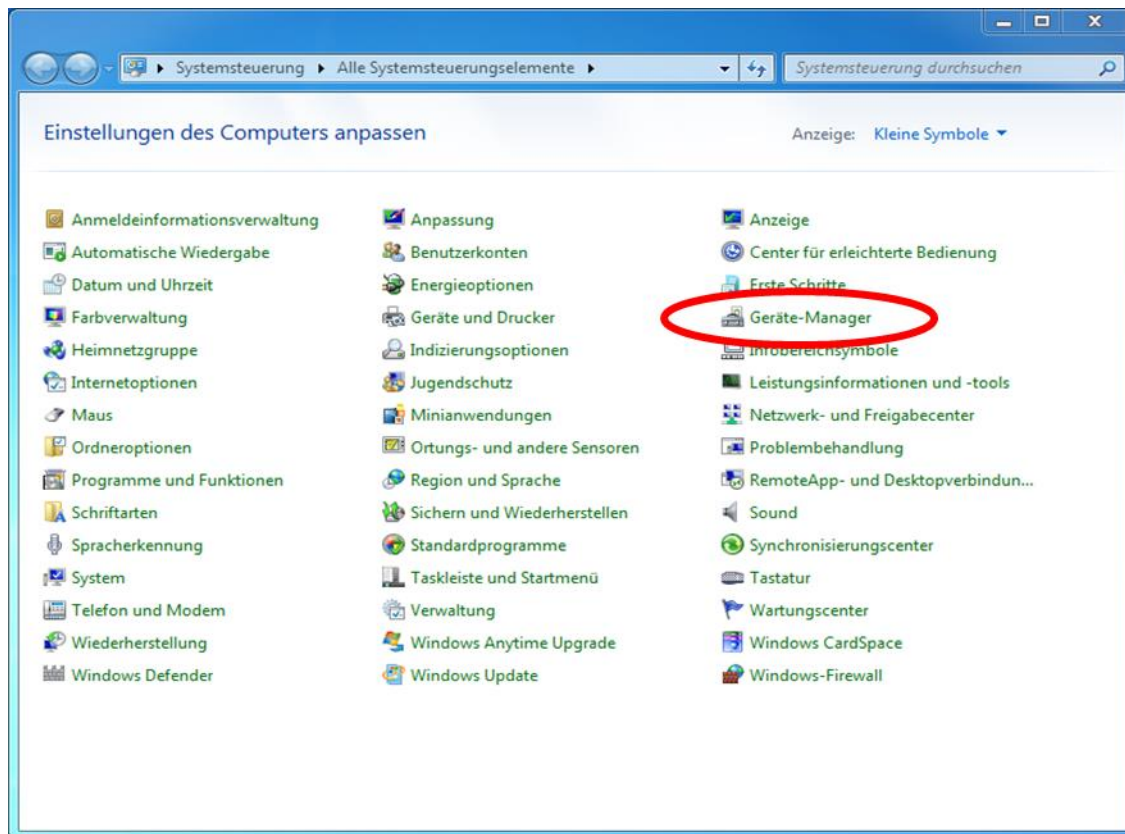
If the Multi Sound Module is connected to the PC, the automatic device driver installation of Windows 7 starts. The installation wizard cannot find a suitable driver and indicates this by an appropriate message.



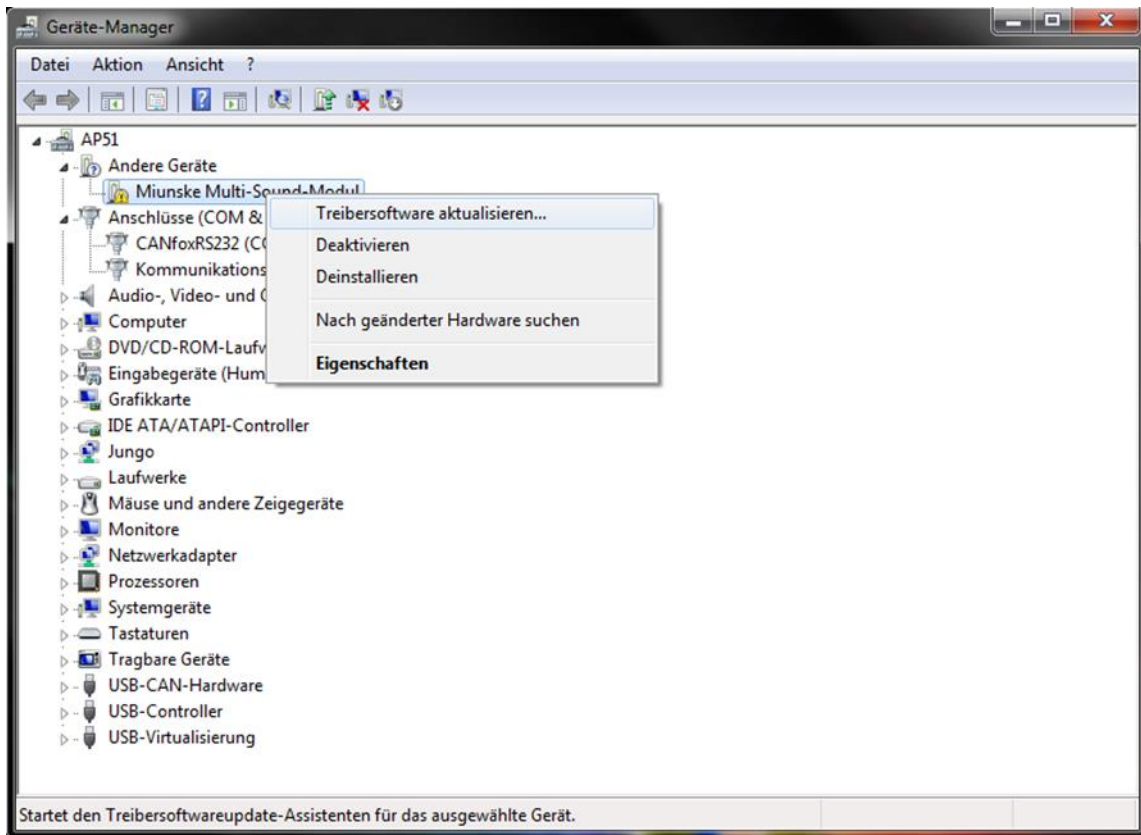
The driver of the Multi Sound Module must be installed manually in the Device Manager. Please open the Control Panel in the Start Menu.



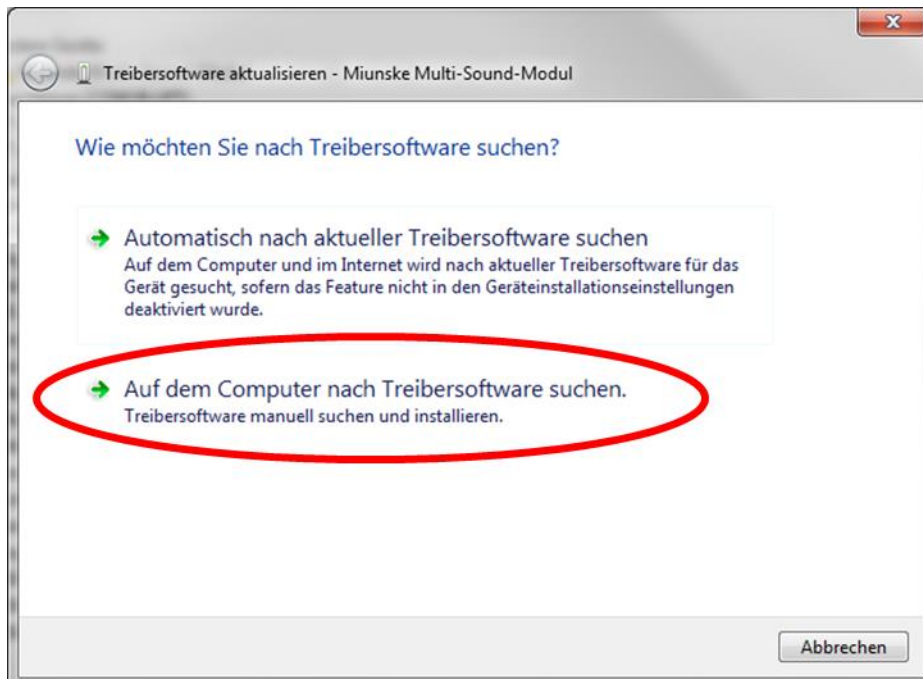
Double-click on the Device Manager in the Control Panel.



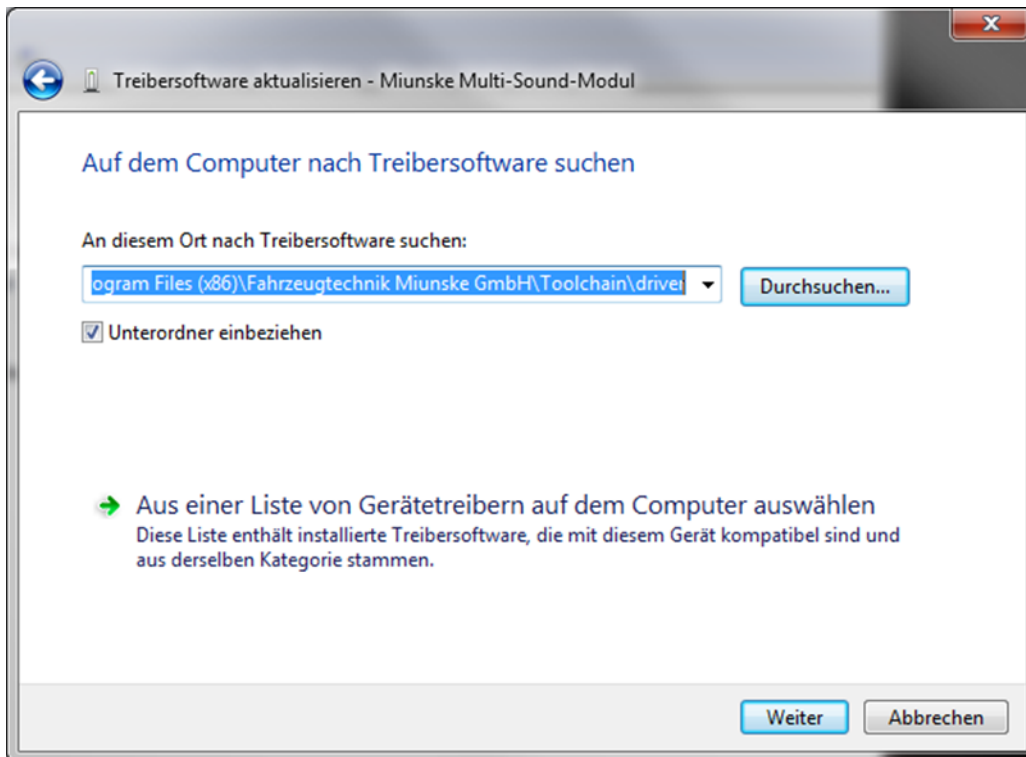
By right clicking on “Miunske Multi-Sound-Modul” a context menu opens where the driver update can be started.



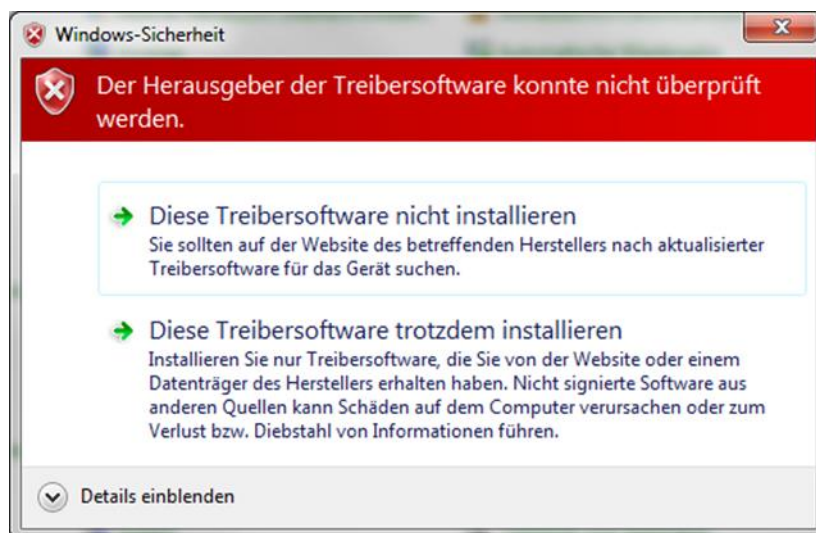
The next step is the manual installation of the driver software.



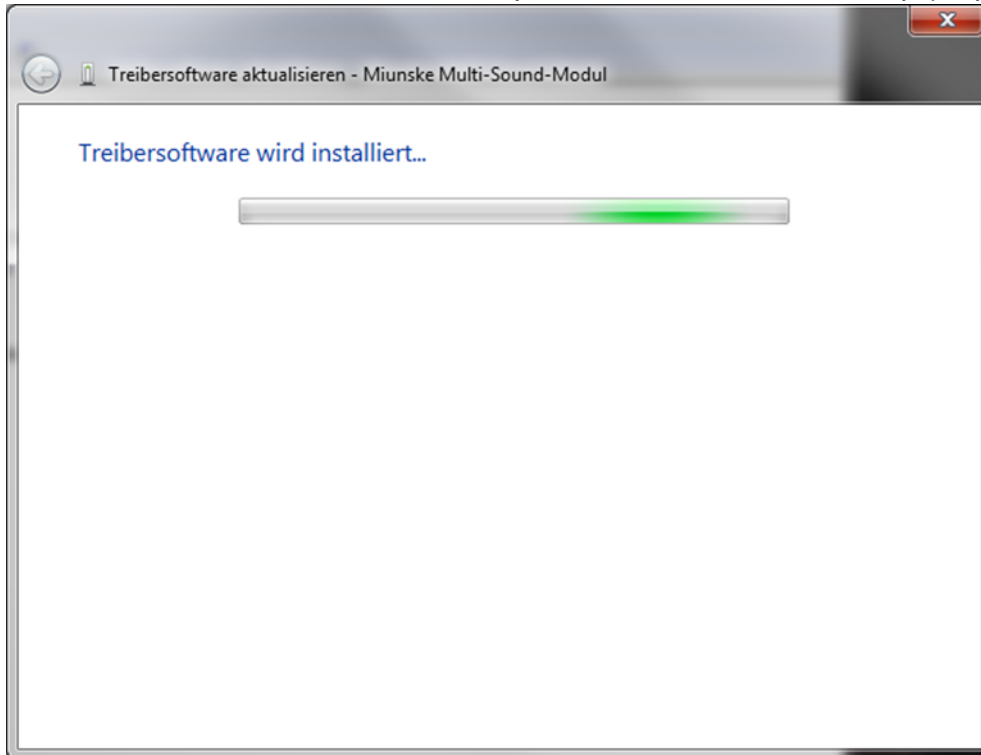
By clicking on *Browse* a window opens and the path to the driver software should be selected. The driver can be found *in the installation directory of the Toolchain* in the *driver* folder.



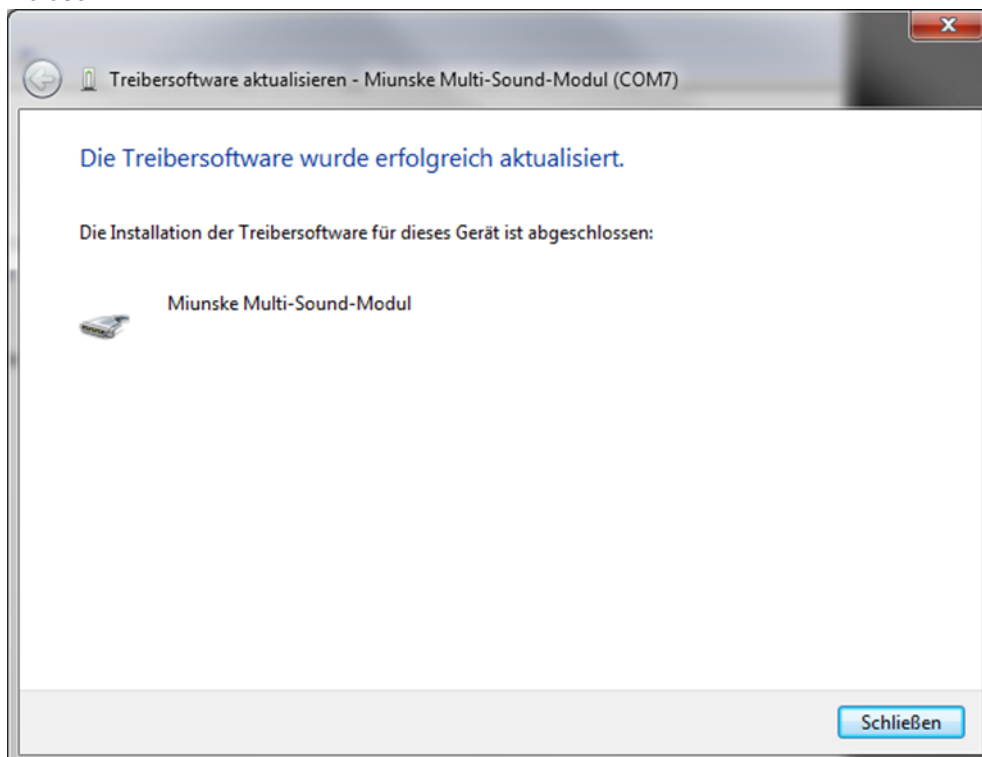
After confirming by clicking on *continues* a security query opens. It needs to be confirmed because the driver is not signed by Windows.



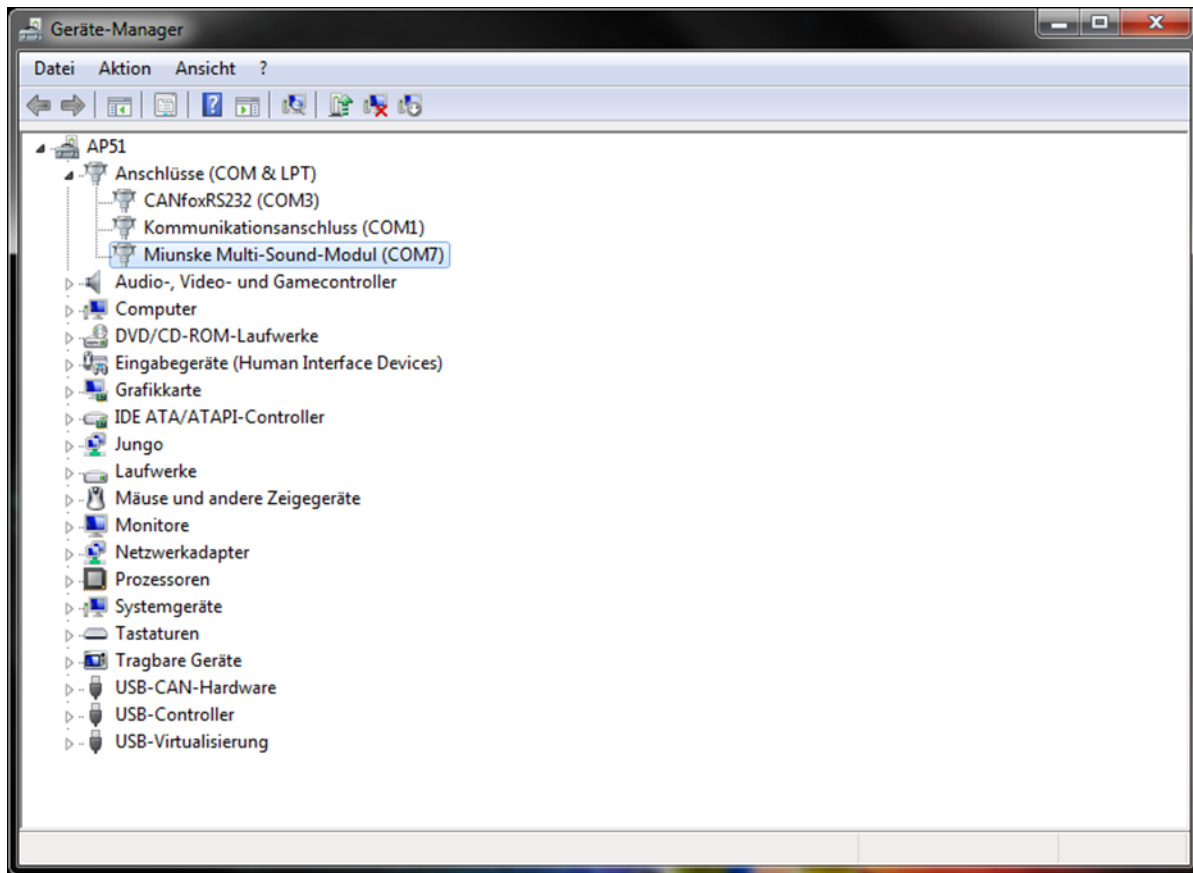
The driver installation will start automatically after confirmation of the security query.



Successful installation is indicated by the following window and has to be confirmed by clicking on *close*.



The Miunske Multi Sound Module has been added as a virtual COM Interface in the Device Manager now. The Device Manager and the Control Panel can be closed and the Multi Sound Module is configurable by the Toolchain now.



2 Windows 8 und 8.1 32/64 Bit

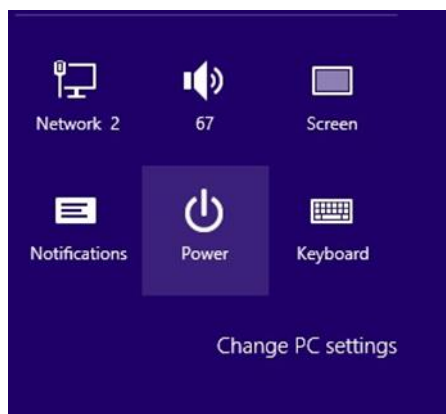
2.1 Driver installation of Multi Sound Module

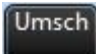
After the multi-sound module is connected to the PC does not recognize Windows 8 and this brings no message. This is an unsigned driver.

This is installed as follows.

Press the button  and the button 

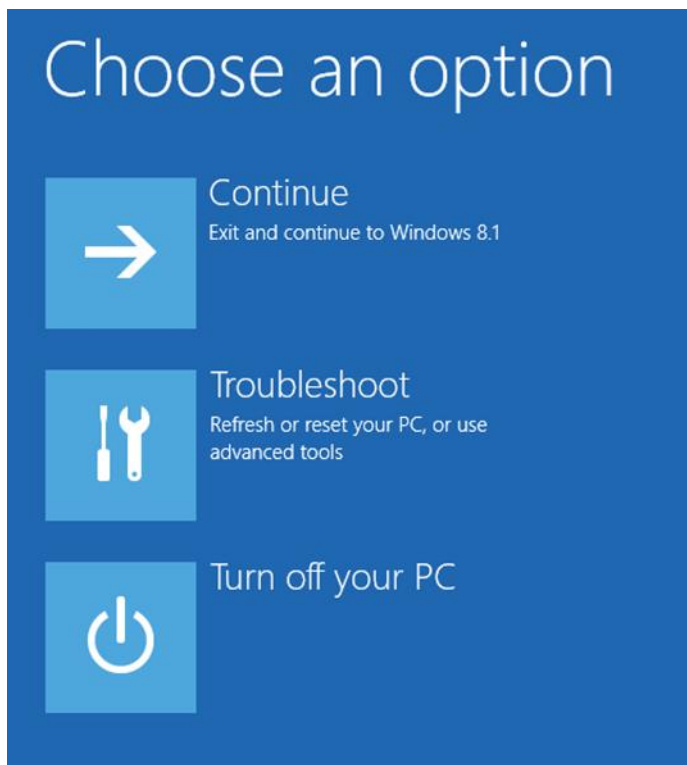
Now select the "Power" button with the left mouse.



Please press now the  button and click with the left mouse button on "New Start"

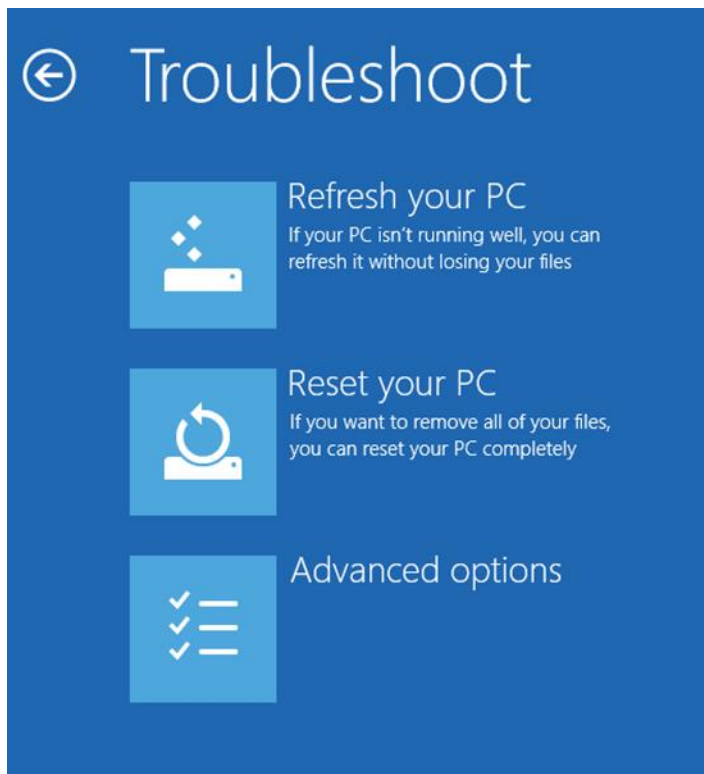


If you have done everything correctly, you should now see this window.

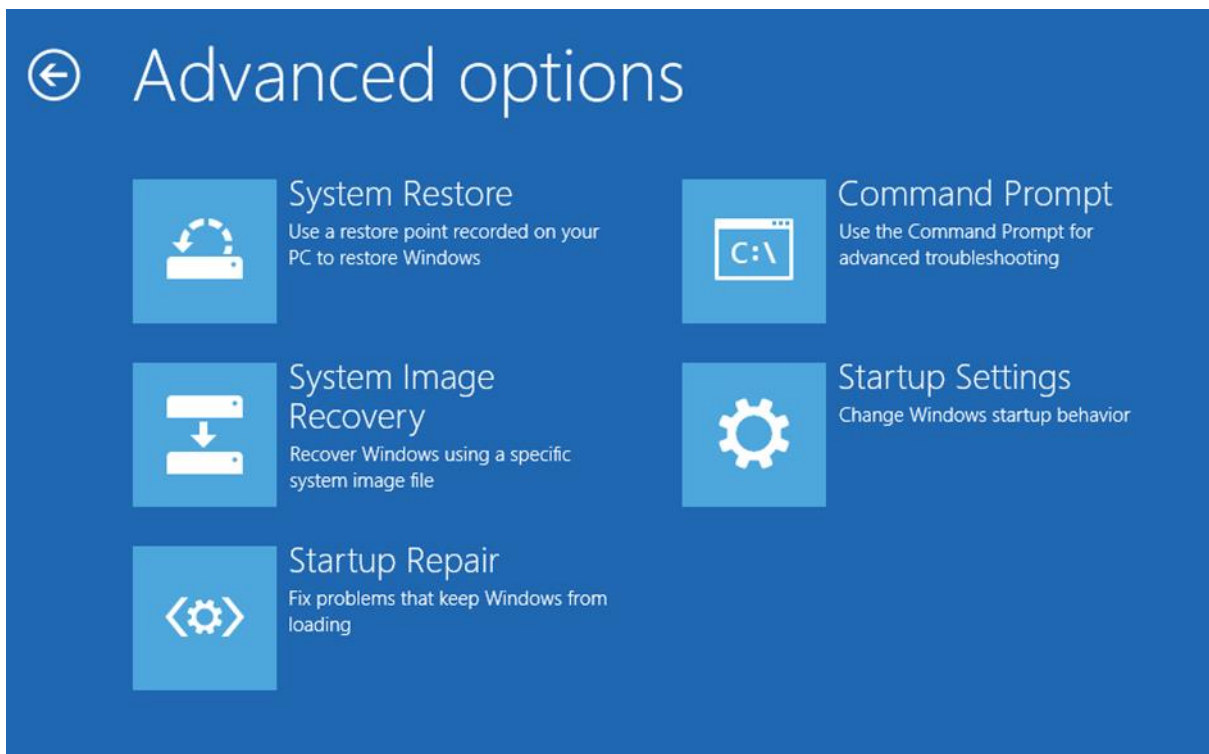


Now click with the left mouse button on "Troubleshoot".

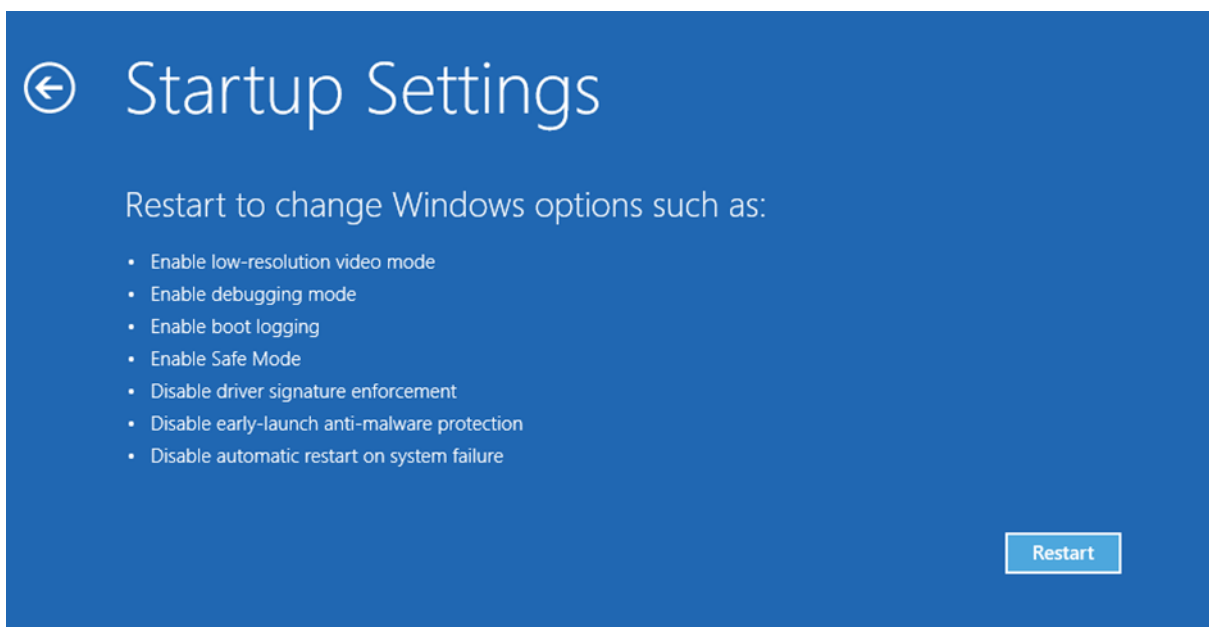
Under the Troubleshoot menu contains three menu items.
Please select the menu item "Advanced options"



Now select the menu item "Startup Settings".

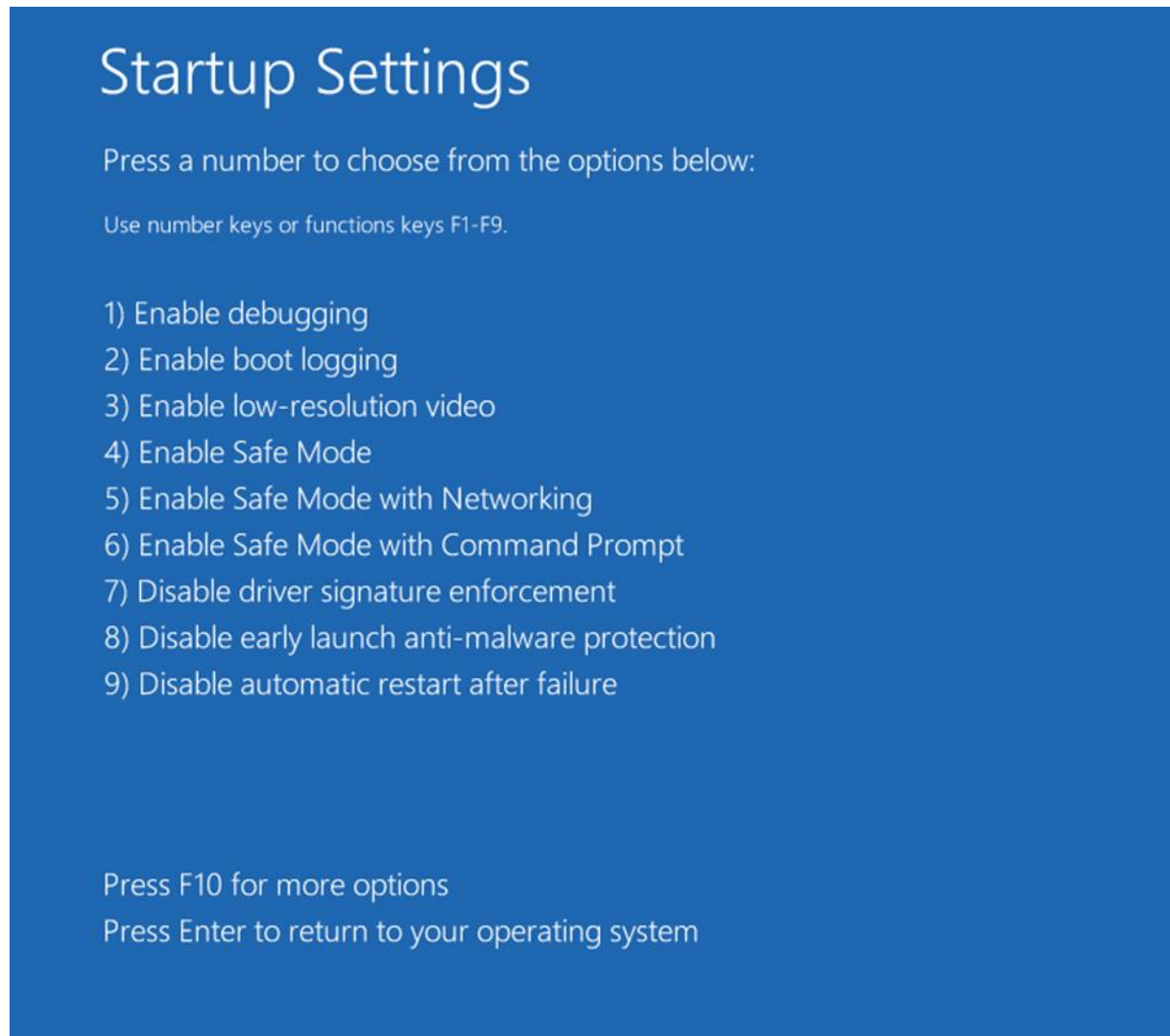


After you have selected this you need the computer Restart this please do by clicking the "Restart"



After a successful reboot to get into this menu.

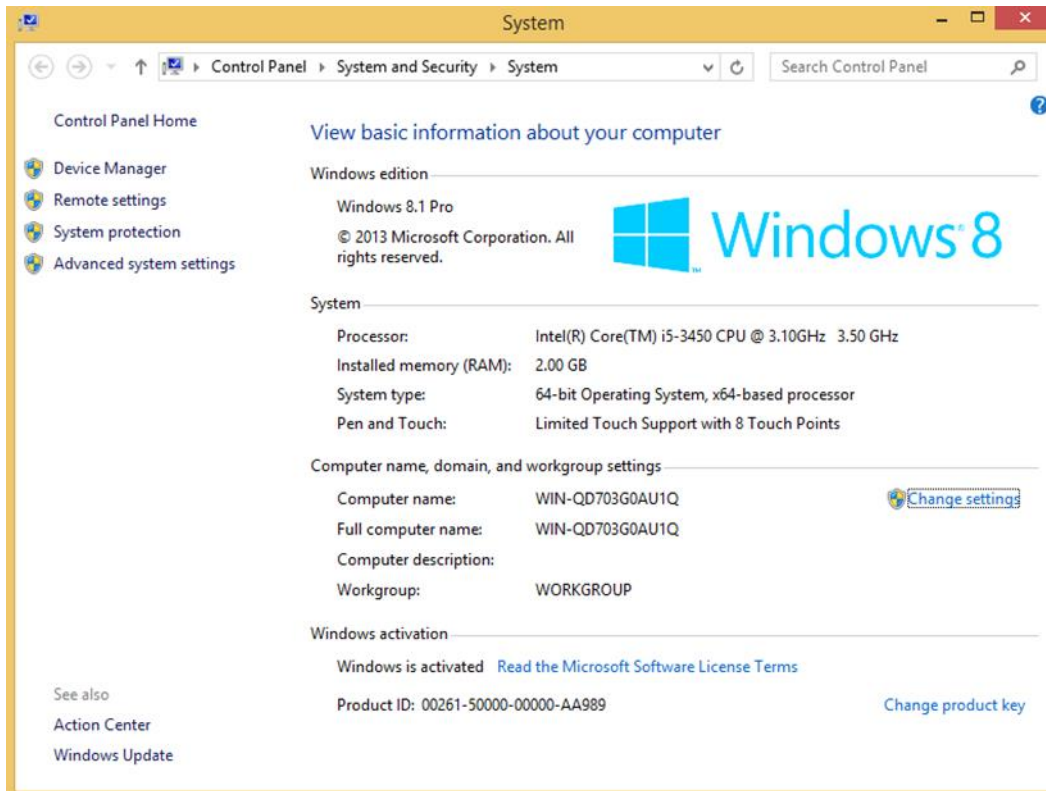
Here you can choose the item "7) Disable Driver signature enforcement"



The driver of the Multi Sound Module can now be installed.

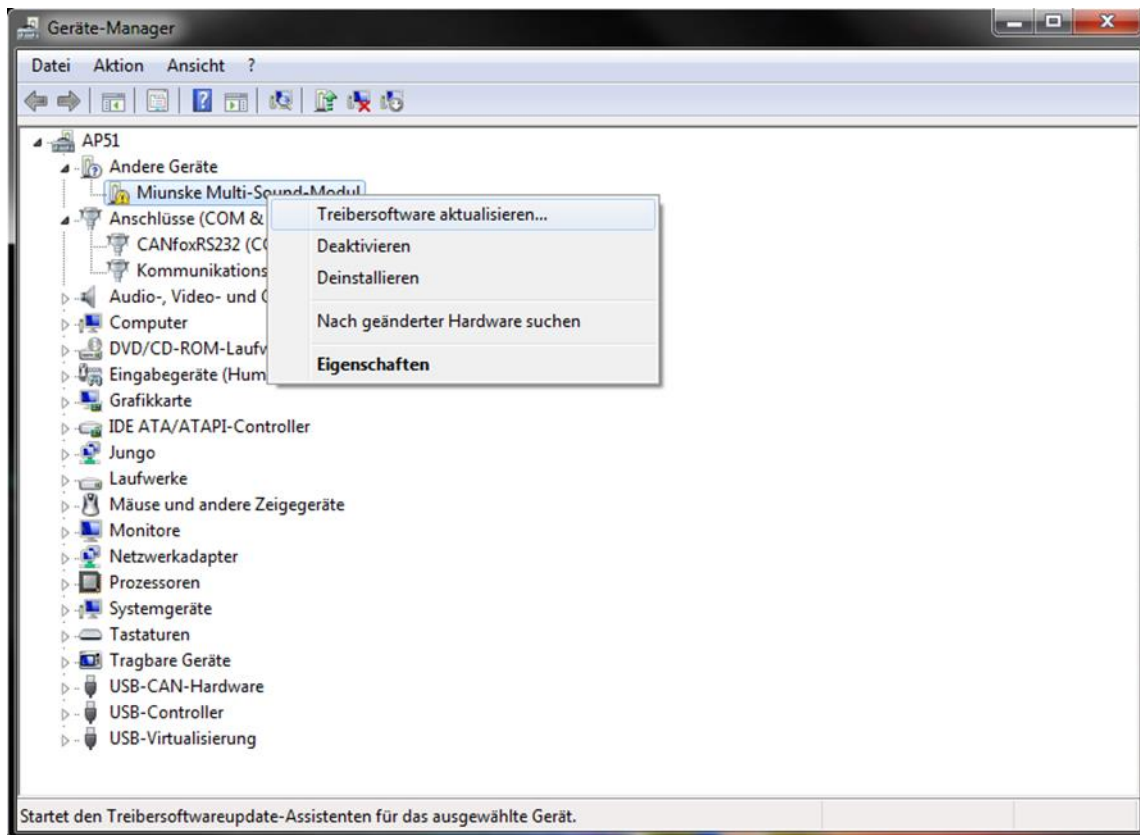
This must be done manually in the device manager.

By pressing the key combination with the  key and  you get to this window.

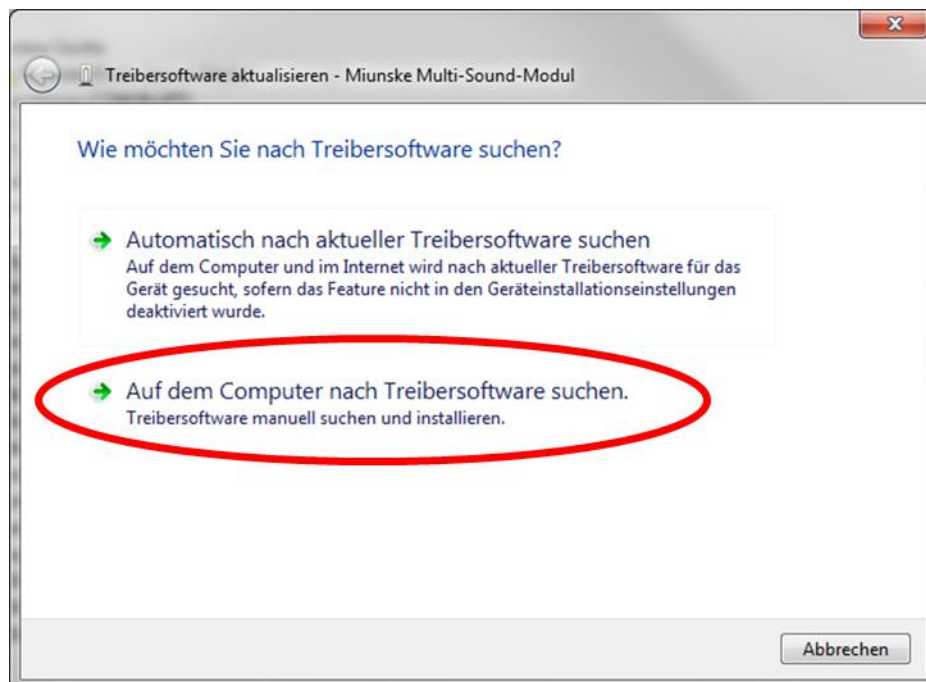


Once there, select with the left mouse button the "Device Manager".

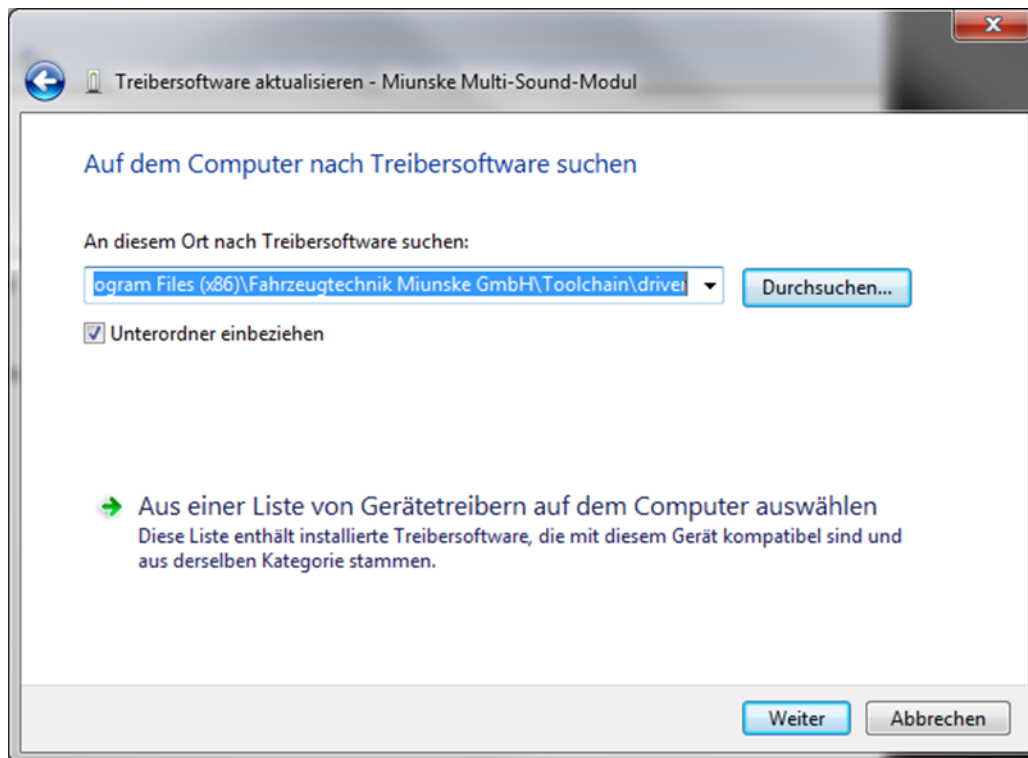
In the "Device Manager" find the "Miunske Multi-Sound-Modul" with an exclamation mark. Click it with the right mouse button and select the menu item "Update Driver Software"



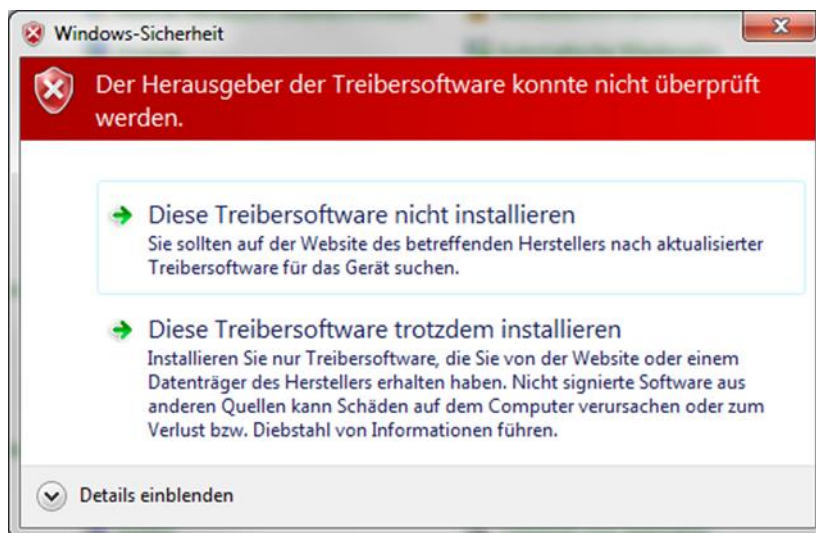
The next step is to manually install the driver software to choose.



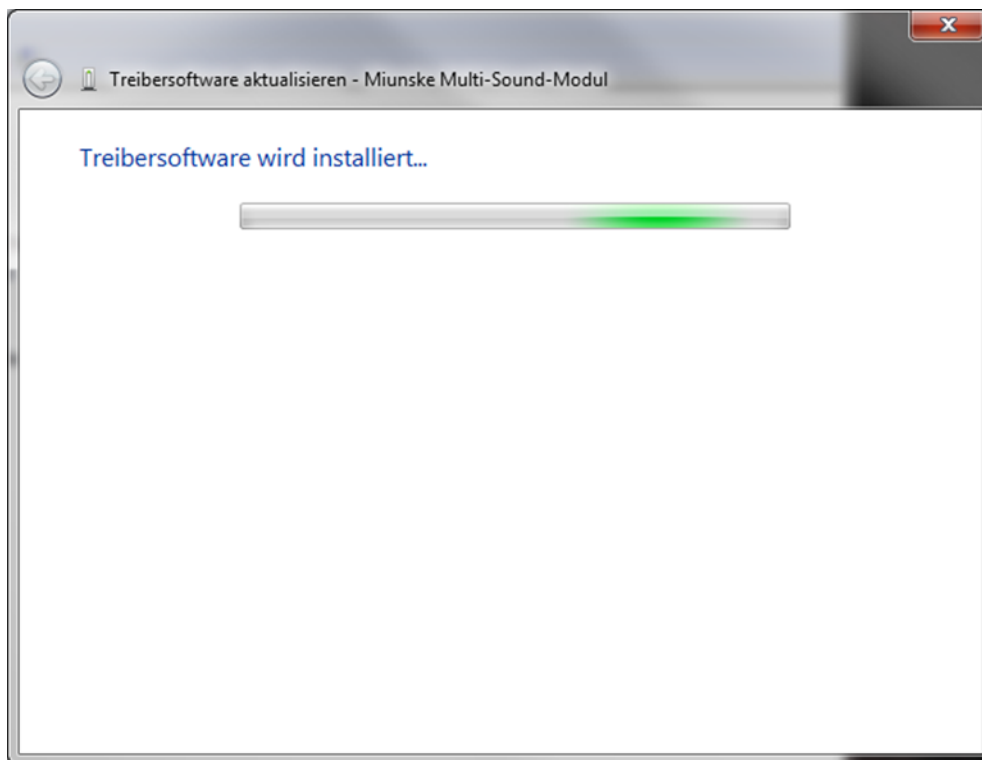
It opens a window in which shall be selected by clicking Browse, the path to the driver software. The driver can be found in the installation directory of the Toolchain in the folder driver.



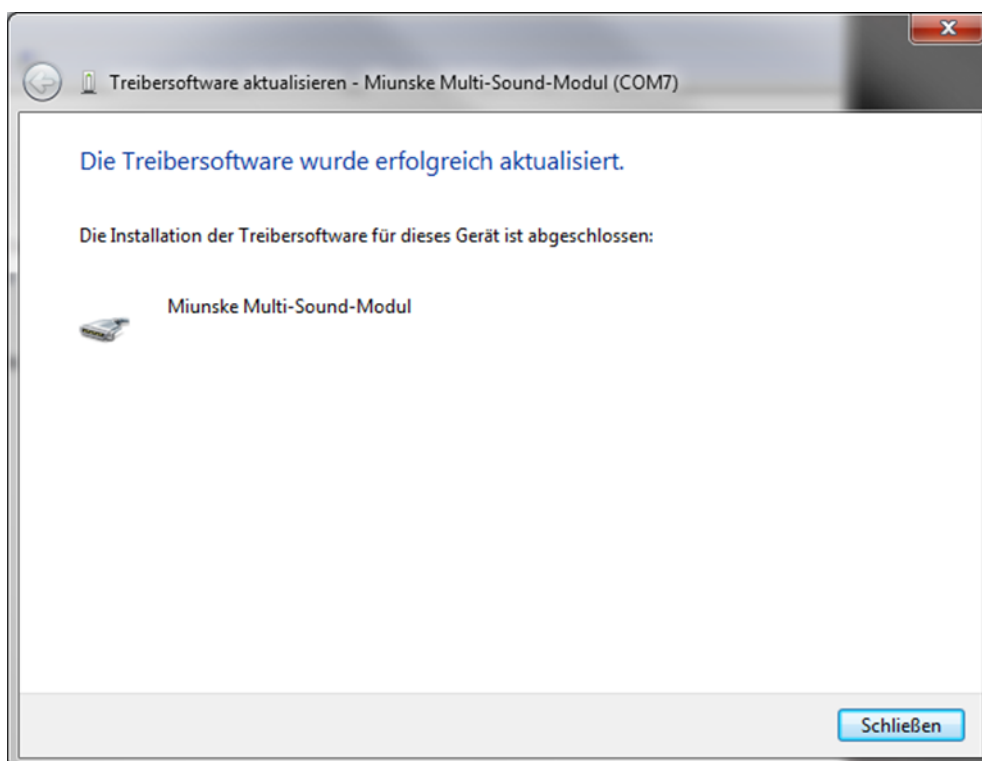
After confirming with the click on Next opens a security prompt. Because the driver is not signed by Windows, this must be confirmed.



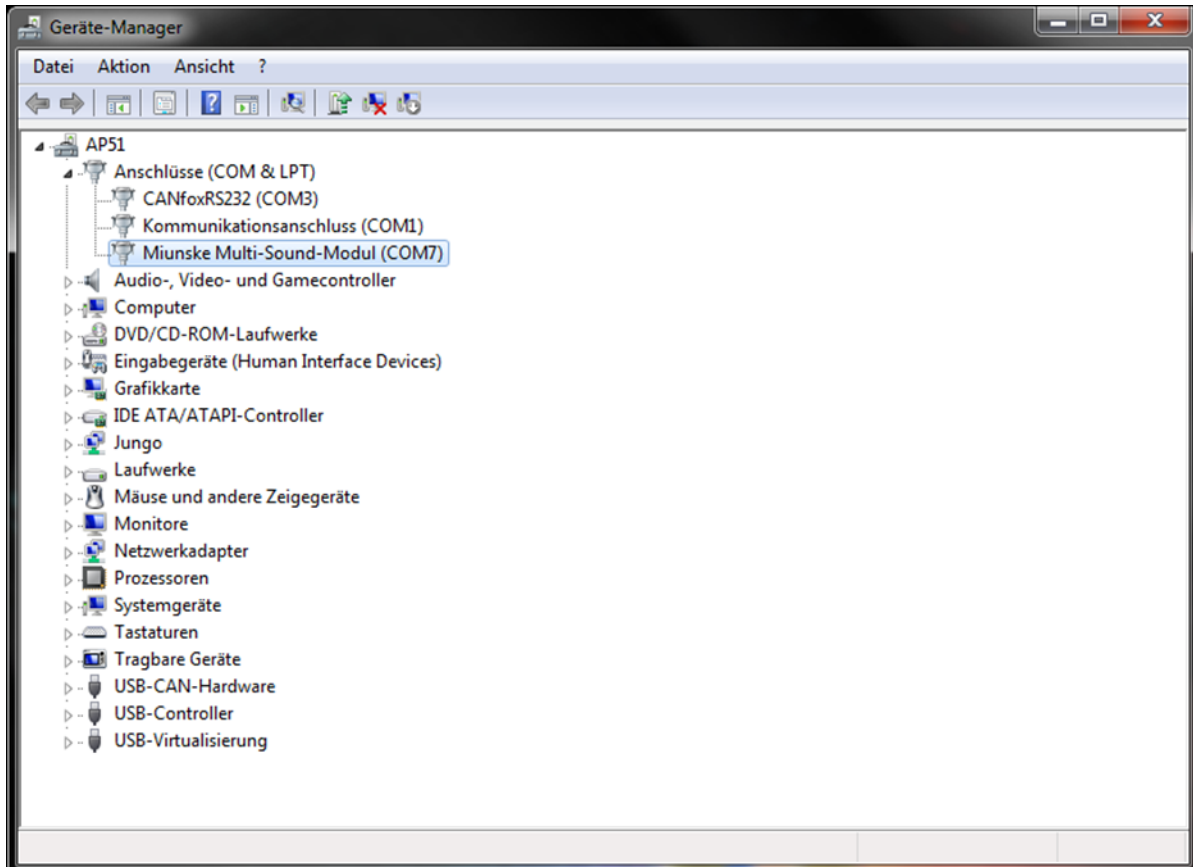
The driver installation starts after confirming the prompt automatically.



The successful installation is indicated by the following window and must be confirmed by clicking on Close.



In the Device Manager the Miunske Multi Sound Module has now been added as a virtual COM port. The Device Manager and the Control Panel can now be closed. The Multi Sound Module is now configurable via the Toolchain.



3 Windows 10 32/64 Bit

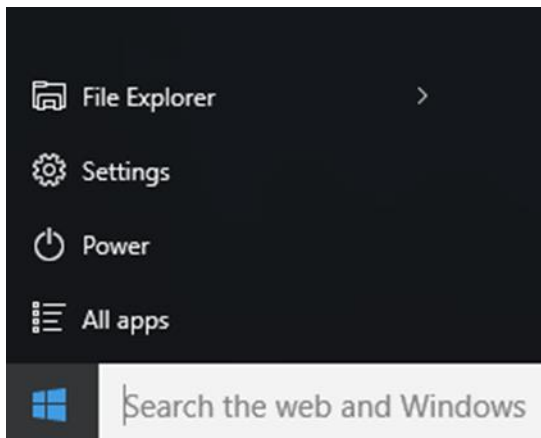
3.1 Driver installation of Multi Sound Module

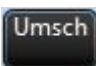
After the multi-sound module is connected to the PC does not recognize Windows 10 and this brings no message. This is an unsigned driver.

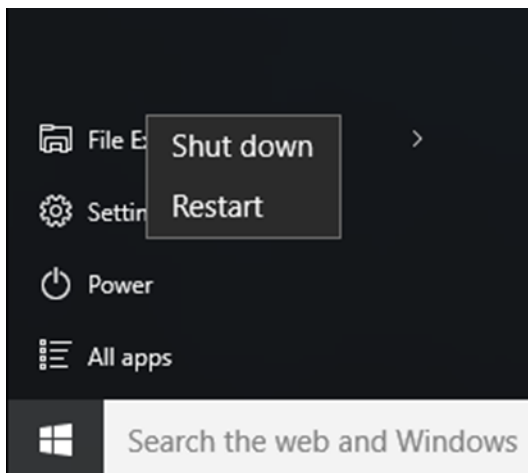
This is installed as follows.

Press the  button

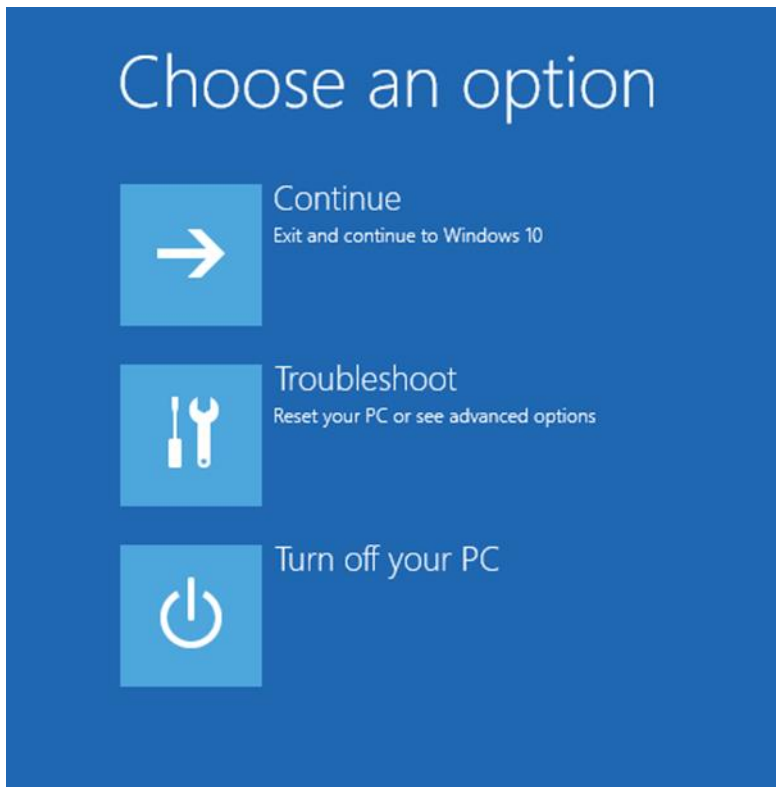
Now select the "Power" button with the left mouse.



Please press now the  button and click with the left mouse button on "Restart"

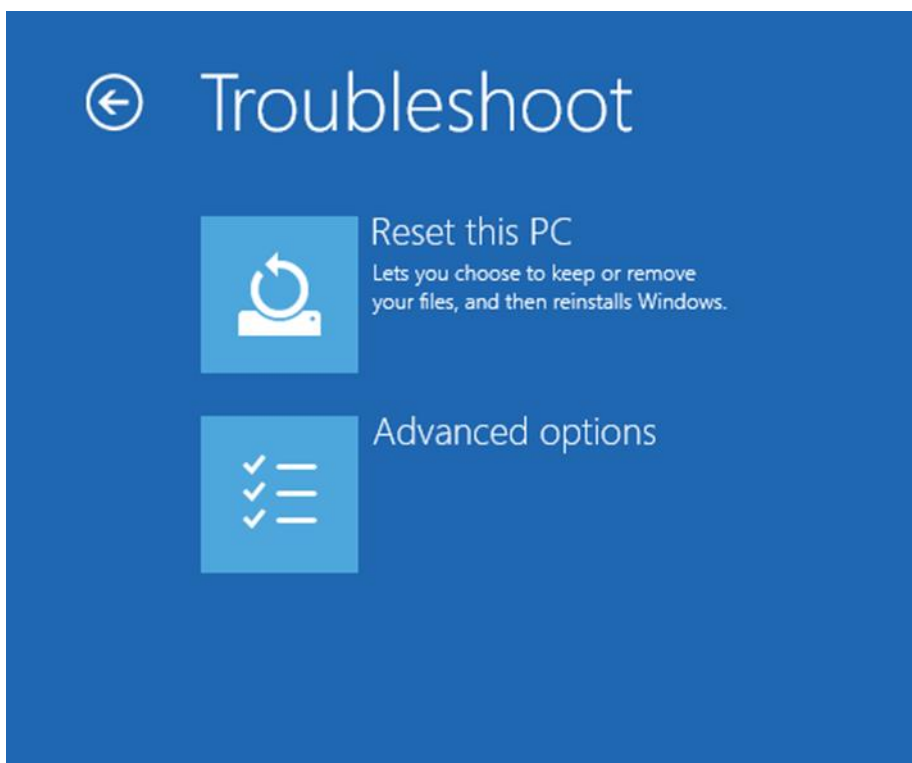


If you have done everything correctly, you should now see this window.

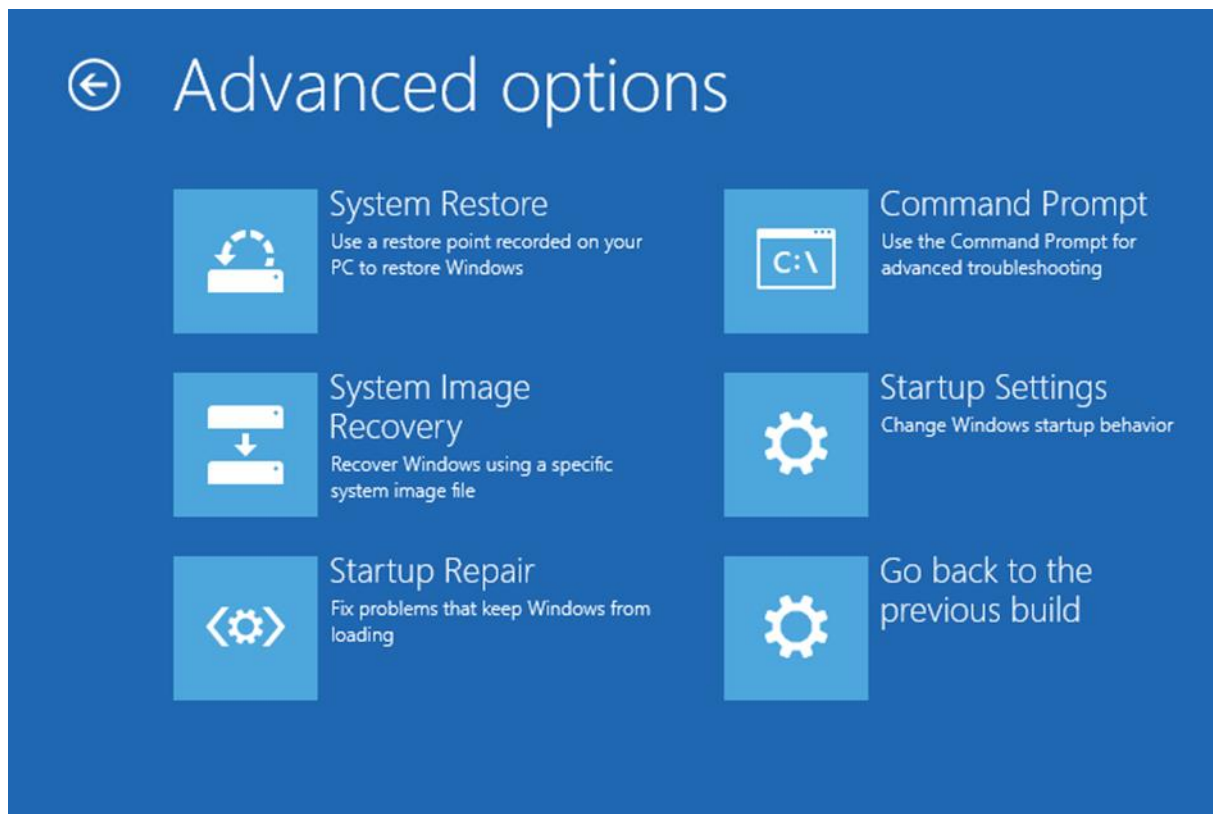


Now click with the left mouse button on "Troubleshoot".

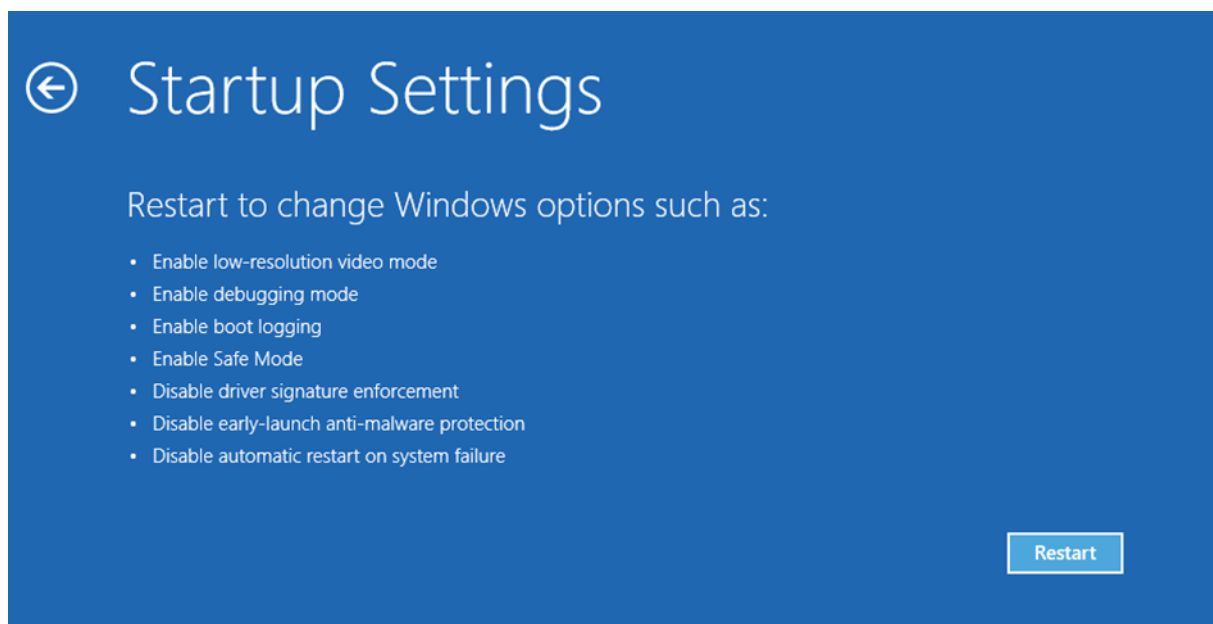
Under the Troubleshoot menu contains two menu items. Please select the menu item "Advanced options"



Now select the menu item "Startup Settings".

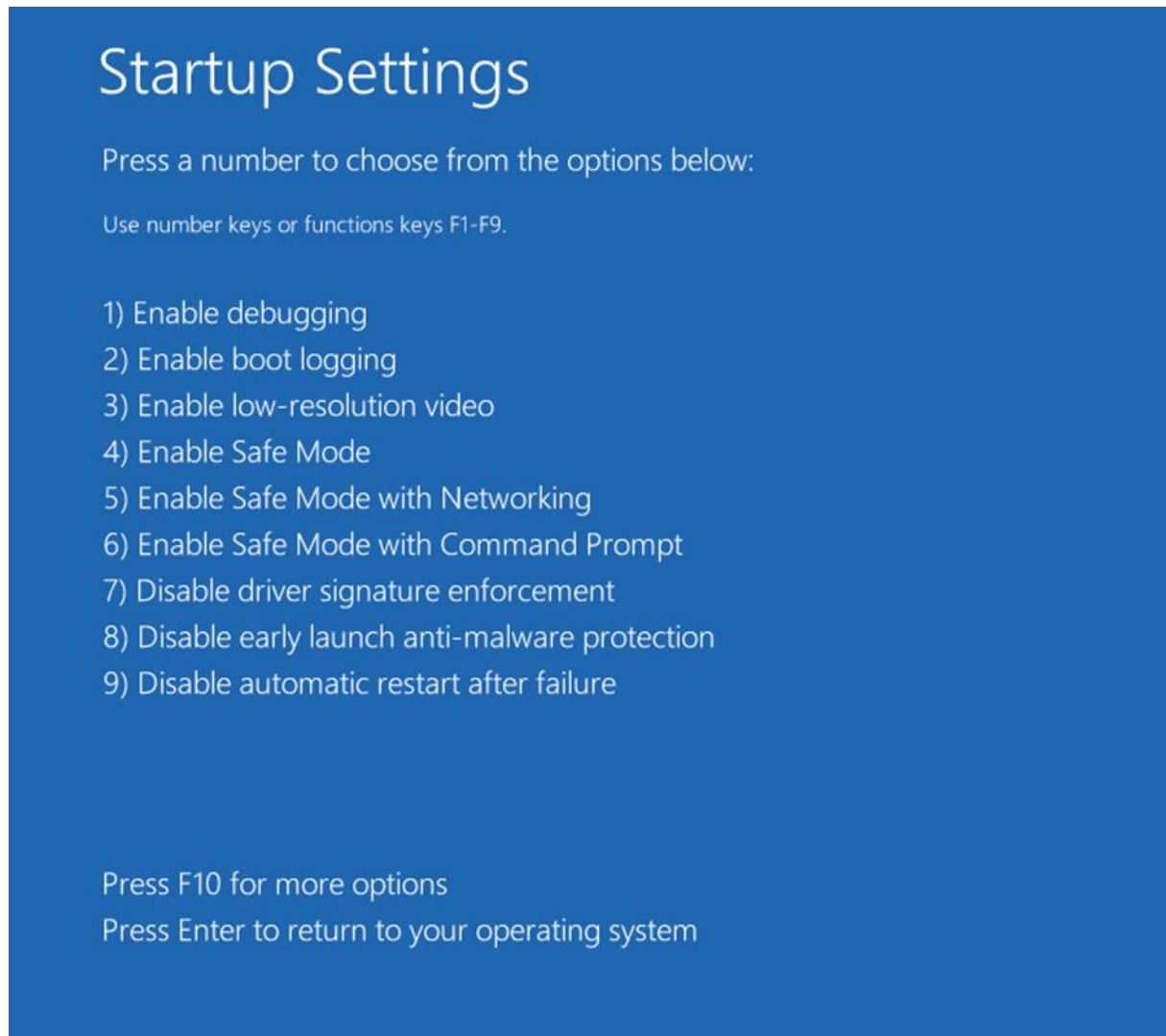


After you have selected this you need the computer Restart this please do by clicking the "Restart"



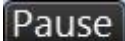
After a successful reboot to get into this menu.

Here you can choose the item "7) Disable Driver signature enforcement"



The driver of the Multi Sound Module can now be installed.

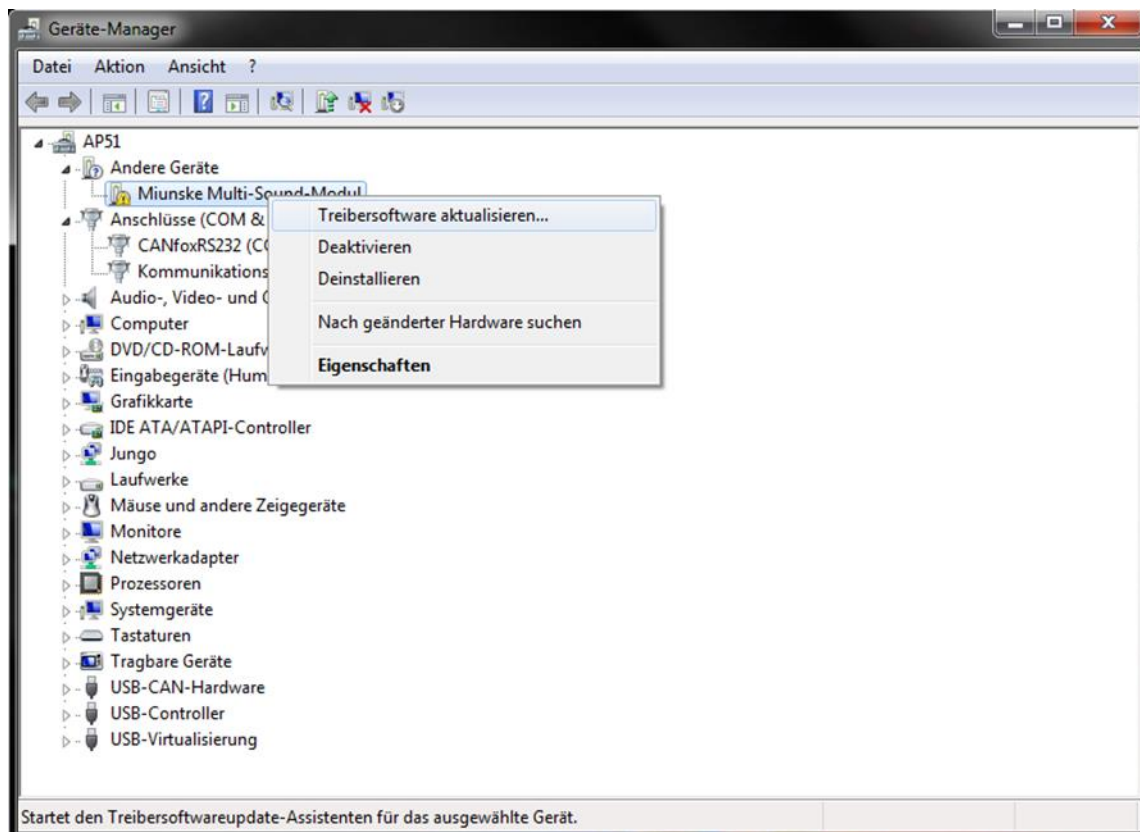
This must be done manually in the device manager.

By pressing the key combination with the  key and  you get to this window.

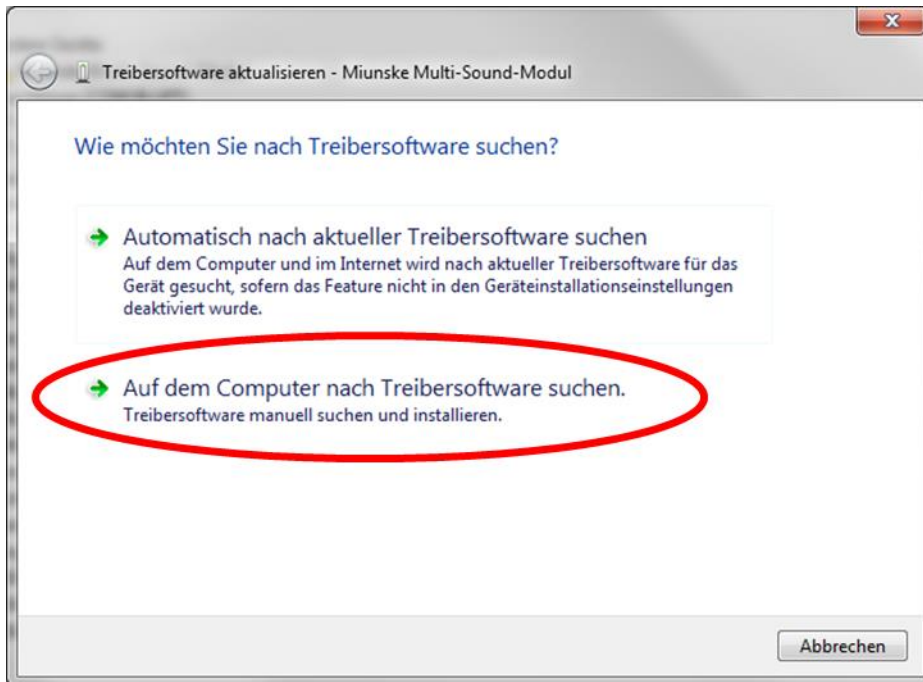


Once there, select with the left mouse button the "Device Manager".

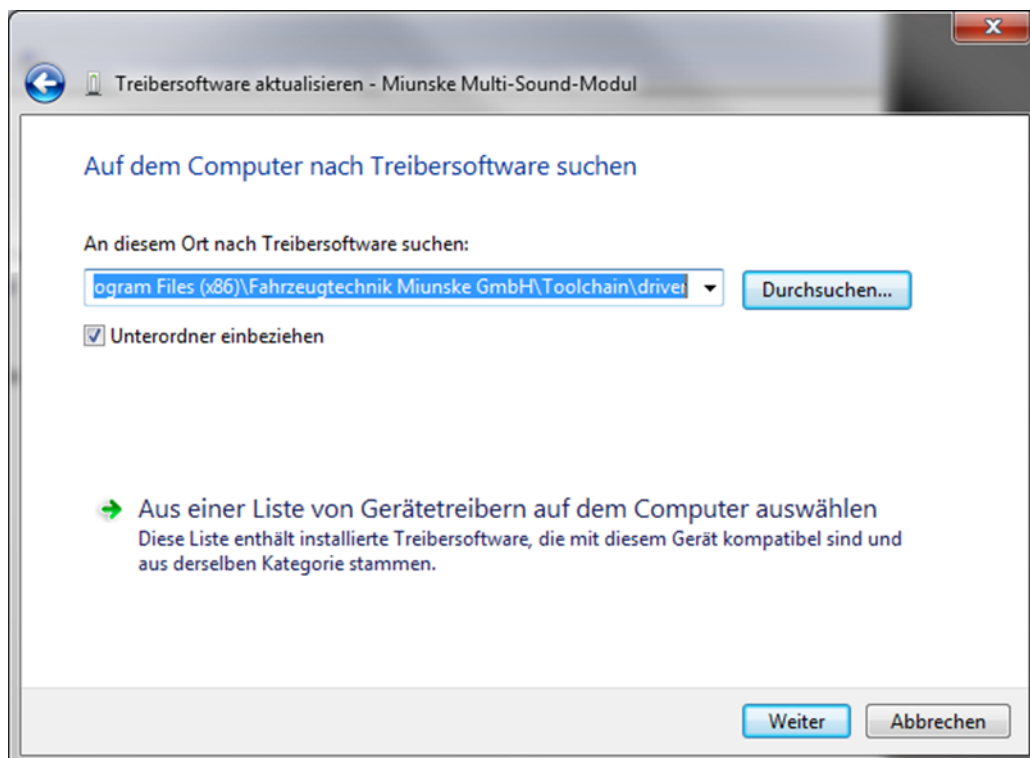
In the "Device Manager" find the "Miunske Multi-Sound-Modul" with an exclamation mark. Click it with the right mouse button and select the menu item "Update Driver Software"



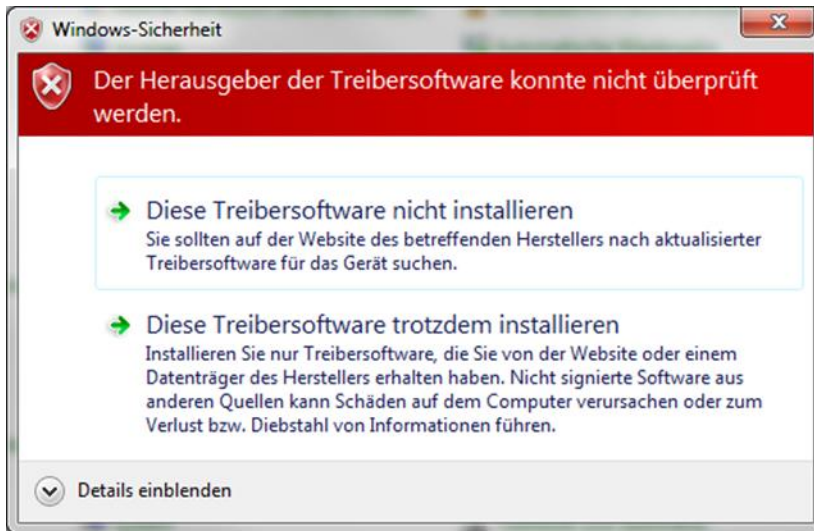
The next step is to manually install the driver software to choose.



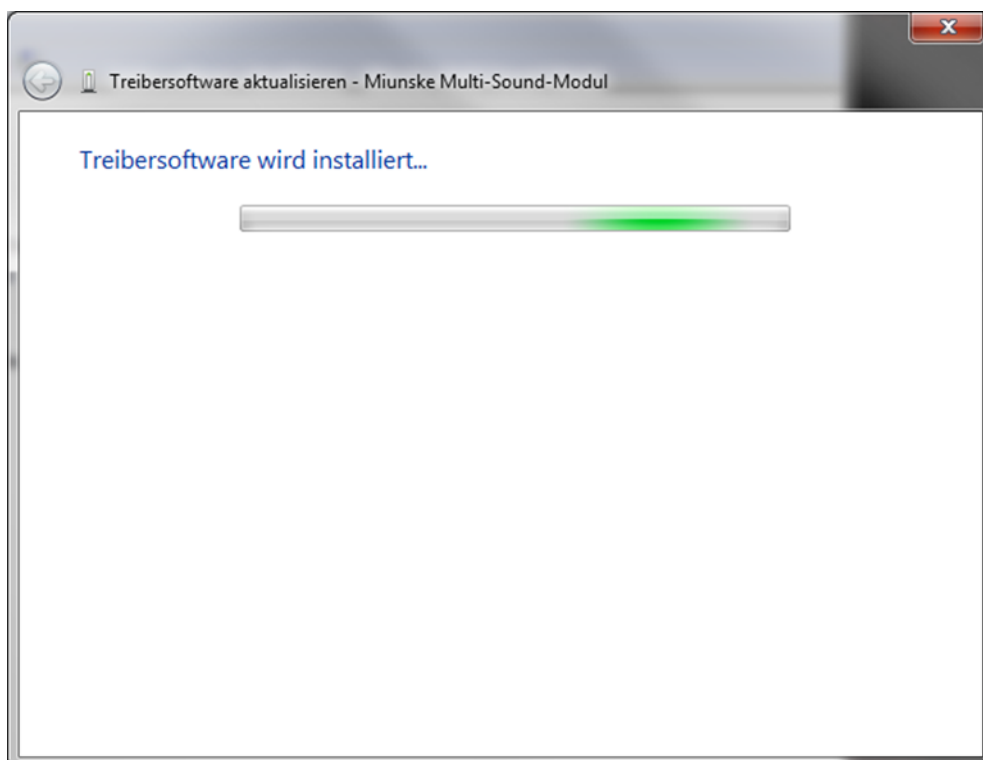
It opens a window in which shall be selected by clicking Browse, the path to the driver software. The driver can be found in the installation directory of the Toolchain in the folder driver.



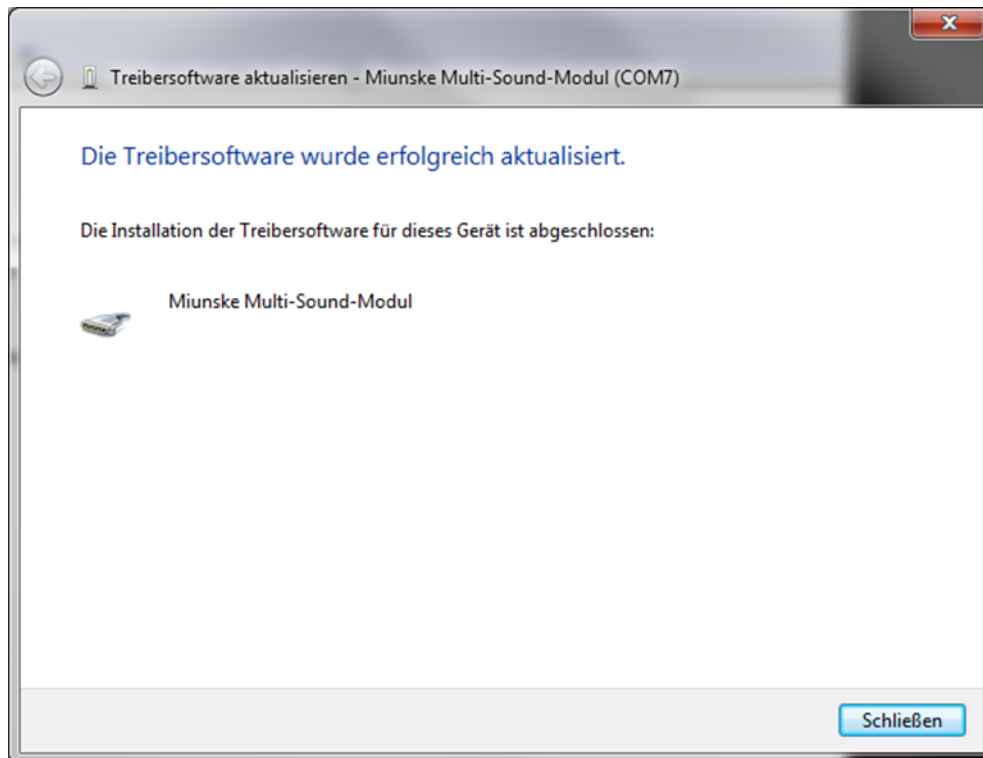
After confirming with the click on Next opens a security prompt. Because the driver is not signed by Windows, this must be confirmed.



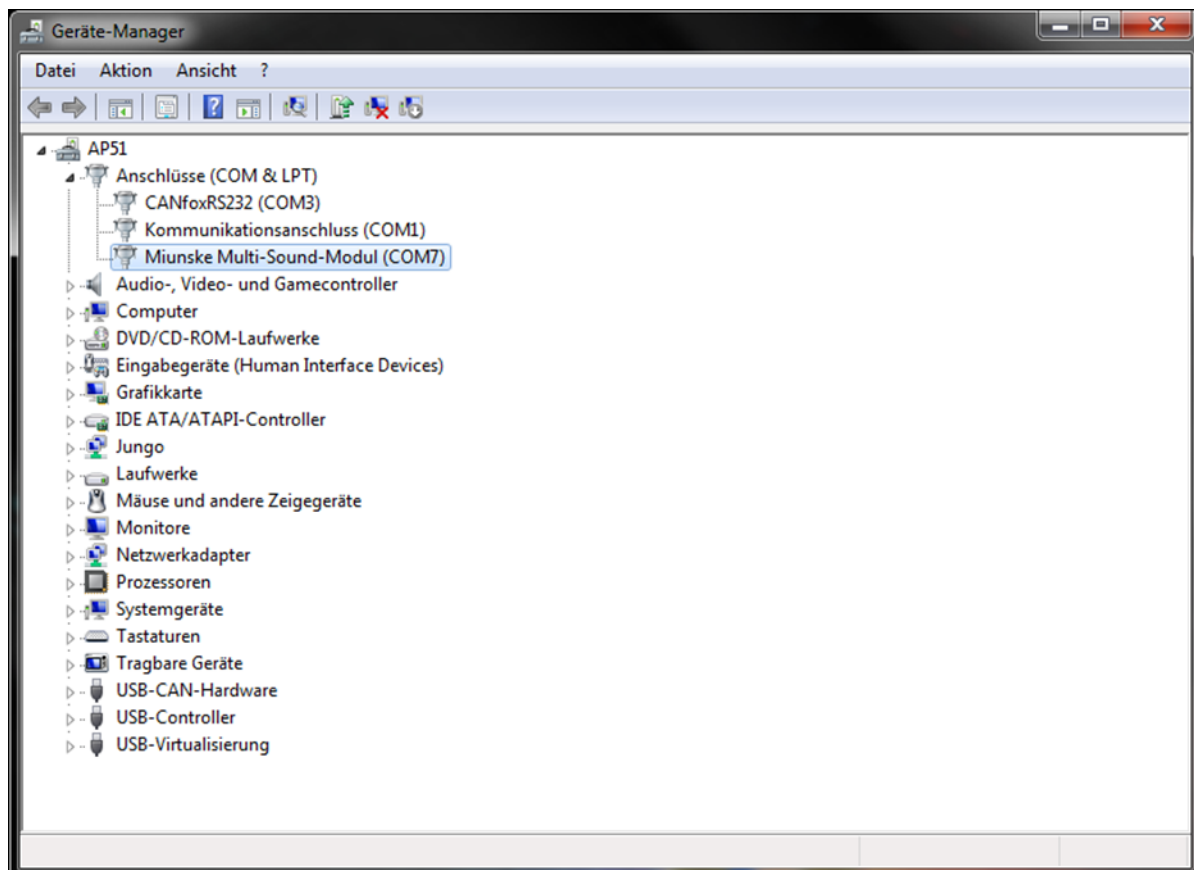
The driver installation starts after confirming the prompt automatically.



The successful installation is indicated by the following window and must be confirmed by clicking on Close.



In the Device Manager the Miunske Multi Sound Module has now been added as a virtual COM port. The Device Manager and the Control Panel can now be closed. The Multi Sound Module is now configurable via the Toolchain.



For technical support, please contact:

developer@miunske.com

Information on updates and recent developments are regularly updated on the Miunske website:

www.developer.miunske.com